 Create pdf

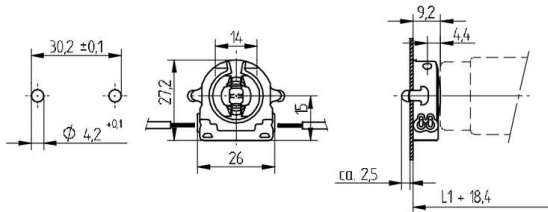
Lampholders and starter holders

26.431.1009

G13 End fixing lampholders



colour	pkg.	wt.	part no.
white	500	5 g	26.431.1009.50



Lampholder thickness: 9.2 mm

Approval: additional cULus (660W /600V)








Wiring: side entry wiring

Snap in pins

Housing: PC

Rotor: PBT

L1+18,4: Recommended dimension - The distance between the cut-outs and the tolerance should be governed by the dimensions of the respective lamps and luminaires.

T 130	Tm 110	U out 500 V					 18 AWG 0.5 - 1.0 mm ²	 0.5 - 1.1	
-------	--------	----------------	---	---	---	---	--	--	---

Document generated on: Mo, 6. February 2017 - 11:22